

## “Remote”, “Out of Band” Network Management via Console

### RMC-MP1200 RouteMagic Controller Multi-Port Model



Rack-mounted type with a unit size of 19 in.

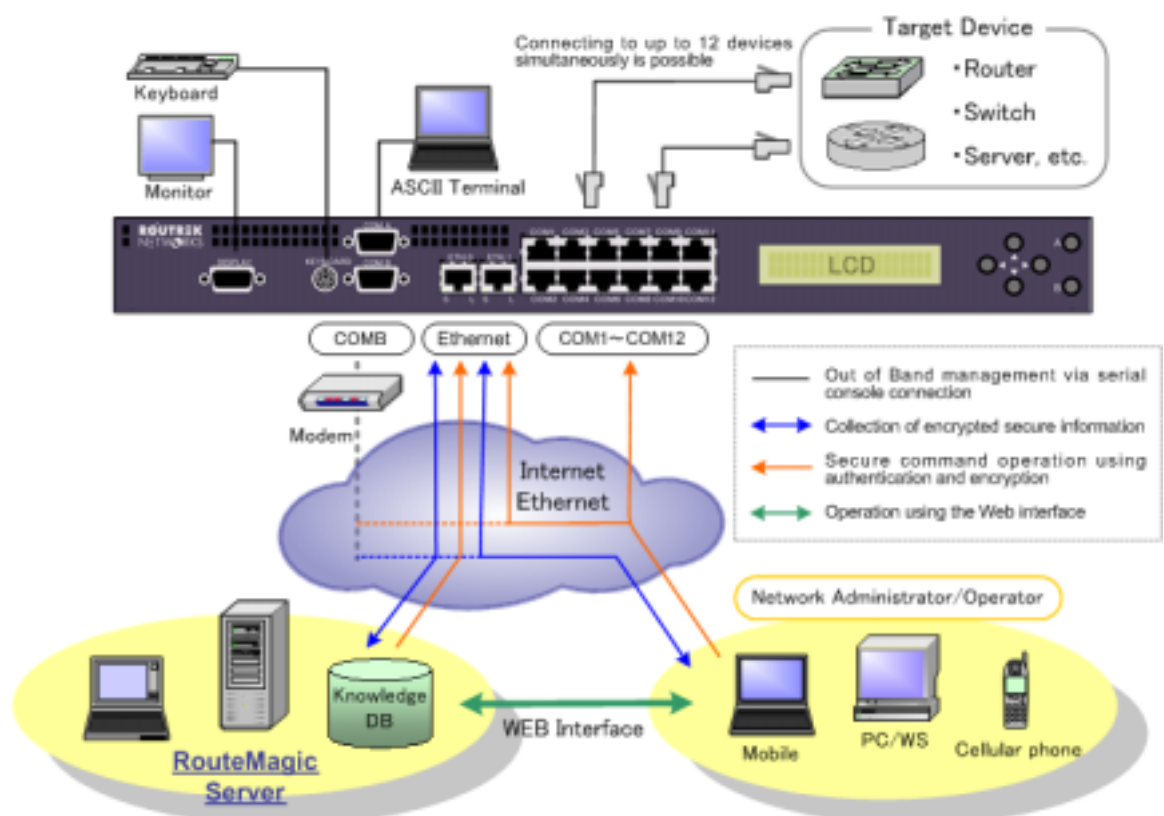
#### Features

- The RMC continuously monitors the console ports of network devices to collect necessary messages (arbitrary filtering is possible) and send a notice of them by e-mail (up to eight addresses).
- The troubleshooting of network devices at remote sites can be performed by remote operation function using SSH/Telnet via the RMC.
- The operation of network devices can be monitored by setting an arbitrary script to automatically issue commands to the console connected to the RMC.
- The RMC powerfully supports systematic remote network management with the following functions by collaborating with the RMS (RouteMagic Server):
  - Various log management functions,
  - Configuration management functions,
  - Incident management functions,
  - Problem solution assisting function, and so on.

RouteMagic Controller (RMC) is an intelligent network management device connected to a device with a console port to implement the monitoring of network devices and secure remote out of band operation. An RMC unit can manage up to 12 network devices.

The RMC collects console data necessary for network management to enable troubleshooting from a remote site. This device powerfully supports not only failure detection but also the recovery process.

#### RouteMagic Controller Schematic Diagram



RMC-MP1200

## “Remote”, “Out of Band” Network Management via Console

### RMC-MP1200    RouteMagic Controller Multi-Port Model

#### Connection Outline

Port	Name	Application	Abstract
COM port (RJ45)	COM1~COM12	Ports for connecting devices to be managed	Connected to the console port of the devices to be monitored. Up to 12 ports can be monitored and operated.
COM port (DB9)	COMA	For connecting a local terminal	Connect a PC to operate the RMC or the console port of the device to be monitored.
	COMB	For connecting a modem	Connect a modem to use it for notices from the RMC or operation from remote sites.
Ethernet (100base-TX)	ETH0	For notices	Used for notices from the RMC. Information from each port is sent by e-mail.
	ETH1	For remote operation	Remotely operate the RMC via Ethernet.
Keyboard / Display		For local operation	Connect a keyboard or monitor to operate the RMC or the console port of the device to be monitored.

#### Function and Operation

Function	Outline
Monitoring a console port continuously, monitoring console messages, monitoring availability of devices, notice function, collecting logs, and so on.	The console port is monitored continuously, and collected information can be sent to a client such as the RMS or PC by e-mail. In addition, each port is equipped with a function for message filtering or regular monitoring and operation with an arbitrary script to support flexible operation.
Remote console operation function, Console Access Server function	Any console port can be operated via the RMC from a remote site (TELNET/SSH). Multiple users and multiple accounts.
Modem support	E-mail can be sent via a modem so that an alternate route is secured even when Ethernet is not available
Security	E-mail is encrypted for notices, and the SSH protocol is installed for remote operation. PGP and specific encryption are supported for communication with the RMS. The RMC itself is protected by a password.
Operability	With a keyboard/display connector, local operation without a PC is also supported (RMC setup, console port operation: COM1-12). Other operations are performed with the front LCD and keys.
Collaboration with RouteMagic Server (RMS)	The remote network management function is provided through collaboration between the RMC and RMS. Functions such as log collection, problem solution support, remote command entry, and monitoring device availability are provided.
Remote management and operation of various devices	Various types of operations are available, such as the management of firewalls or traffic monitoring devices, or remote operation of the power supply of any device, in combination with a remote power supply operation device.
SNMP agent function	The RMC itself can be monitored by the SNMP manager software. A trap is sent when the RMC is started.

#### Product Specifications

Item	Specification
Processor	IA32
Main memory	256Mbytes SDRAM
Interface	Serial port for connecting devices to be monitored x 12 Serial port for connecting a console/modem x 2 100BASE-TX Ethernet port x 2 Keyboard / Display connector
Display function	20characters x 2 lines display LCD, operation key x 6
Dimension (W x D x H)	455 x 270 x 42 (mm)
Software	RMC Software

The specifications, name, and so on of this product are subject to change without notice for reasons of improvement.  
The company and product names mentioned herein are trademarks or registered trademarks of the respective companies.

### Routek Networks, Inc.

Nissei Shin-Mizonokuchi Bldg., Hisamoto 3-5-7, Takatsu-ku, Kawasaki-shi, Kanagawa, 213-0011, Japan  
Tel +81-44-829-4361                      Fax +81-44-829-4362  
E-mail: [sales@routek.co.jp](mailto:sales@routek.co.jp)                      Web site: <http://www.routek.co.jp/>

RMC-MP1200