

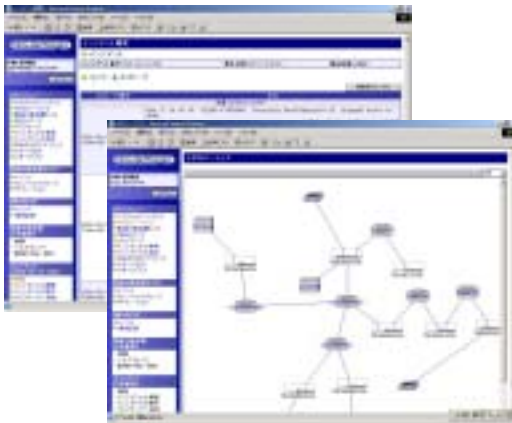
“Remote”, “Out of Band” Network Management via Console

RMS RouteMagic Server

Remote Network Management Software for Powerfully Supporting the Rapid Fixing of Network Failures

RouteMagic Server (RMS) is remote network management software for realizing out of band network management, based on information from the console ports of network devices.

The RMS pursues Web-based simple and easy-to-use operability to realize network management by not only detecting a failure but also guiding the process to recovery with minimal investment.



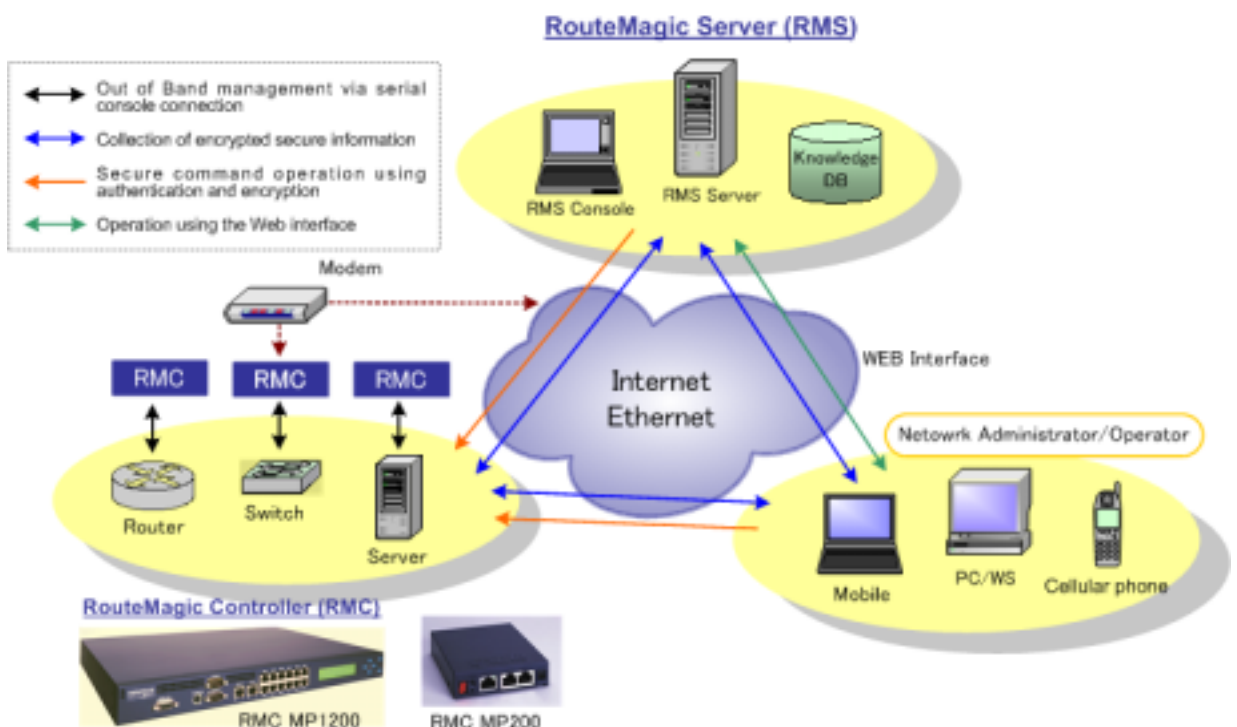
Features

- Logs such as console messages, event logs, and operation logs are managed device by device, based on the network device information received from the RMC (RouteMagic Controller).
- The troubleshooting history is saved as a knowledge database to support rapid troubleshooting.
- Changes and alterations can be detected by the device configuration management function.
- Failures are managed as incidents. Commands can be issued and information can be automatically collected when an incident occurs.
- The RMS can be operated on a visual screen via the Web interface.

Advantages of introduction

- The service level of network management is improved by utilizing the configuration and various log management functions to determine warning signs and take measures before a failure develops into a serious problem.
- Troubleshooting can be advanced and the corresponding time can be shortened by utilizing the trouble details with reference to the troubleshooting history.
- The devices to be monitored can be managed remotely so the need for work on-site can be correctly judged from a remote site to minimize the amount of work.
- Maintenance can be performed without influencing the network during operation by constructing an out of band management environment.

System Diagram



“Remote”, “Out of Band” Network Management via Console

RMS RouteMagic Server

RouteMagic Server



Operation Log Management Function

The RMS manages the operation records of devices to be monitored and the RMC as logs. Operation logs are managed device by device to make the logs easy to view. Necessary logs can be downloaded.



Configuration Management Function

The device configuration information of present and previous generation is managed device by device, and necessary data can be downloaded.



Incident Management Function

Obstacles are managed as incidents in the setup of messages and thresholds of network devices. The troubleshooting history can be checked on the same screen.



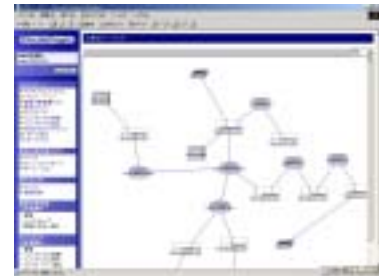
Troubleshooting Knowledge Database

The troubleshooting history is saved in the knowledge database of the RMS. The saved information can be utilized when a similar trouble occurs.



Formula Command Function

By registering frequently used commands in the RMS beforehand, the commands can be issued easily, and the initial troubleshooting of network devices can be rapidly performed.



Topology Map

Network devices to be managed and their status can be confirmed visually. Easy-to-view screen configuration can be applied according to the scale of the network.

Other Major Functions

- Account Management : Accounts can be managed for each organization introducing the RMS and system user to guarantee confidentiality with the management organization.
- Report Output : The configuration data and various log data of network devices can be downloaded from the RMS to create regular reports.
- Security : For communication between the RMC and RMS, an encryption function using PGP, a specific encryption method (RES) and encryption communication using SSH are equipped to exchange highly confidential information.

Product Specifications

Product	RouteMagic Server	
Operation environment	Hardware	OS
	CPU IA32 (pentium II or higher)	Red Hat Linux
Network environment	TCP/IP network (IPv4)	

The specifications, name, and so on of this product are subject to change without notice for reasons of improvement. The company and product names mentioned herein are trademarks or registered trademarks of the respective companies.

Routrek Networks, Inc.

Nissei Shin-Mizonokuchi Bldg., Hisamoto 3-5-7, Takatsu-ku, Kawasaki-shi, Kanagawa, 213-0011, Japan
 Tel +81-44-829-4361 Fax +81-44-829-4362
 E-mail: sales@routrek.co.jp Web site: <http://www.routrek.co.jp/>